

LabSpeed Standard SPC Installation Guide

Standard SPC is a LabSpeed Spectro Spark feature add-in. Before installing this feature add-in, a complete LabSpeed SPECTRO 5.9 SPARK Installation must be performed (refer to the LabSpeed Spectro Spark Installation Guide)

Note: LabSpeed Standard SPC requires an activation license and will only run on a licensed version of LabSpeed Spectro 5.9 (or later). Although LabSpeed Spectro will run un-licensed for 60 days, there is no functional trial mode for Standard SPC. A Standard SPC license may be obtained from Spectro sales and service.

Installation is a simple 1-step process, which includes

1. LSStandardSPCInstall.exe – Installs (1) the Standard SPC SQL Server Database and (2) the Standard SPC LabSpeed Add-In

Typically, both the Add-In and the Database are installed on the Instrument PC, but the database may also be installed on any PC on the Local Area Network. For clarity, each configuration is described separately in two sections: (1) Instrument PC Installation and (2) Network PC Installation. Choose one or the other configuration.

Contents

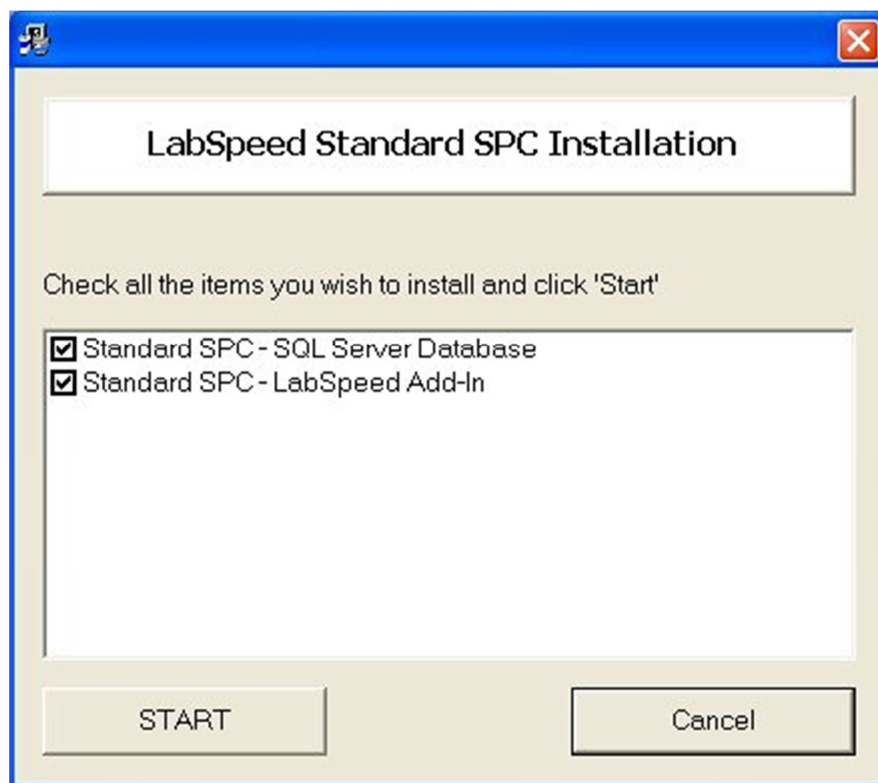
LabSpeed Standard SPC Installation Guide.....	1
Instrument PC Installation	2
Network PC Installation	3
Add the Standard SPC Client(s) to LabSpeed	5
License Activation	6

Instrument PC Installation

In this typical configuration, everything is installed directly on the Instrument PC.

Note: The SQL Server Topos Instance should have already been installed to the instrument PC when installing the LabSpeed Services

LSStandardSPCInstall.exe - This installer will install 2 items – (1) the Standard SPC SQL Server Database and (2) the Standard SPC LabSpeed Add-In



Check both items and click Start. Follow the directions.

Note: if this is an upgrade, uncheck the Database install. It is only a first-time install.

Network PC Installation

In this configuration, the Standard SPC database is installed on a network PC. For example, an organization may want to maintain all physical databases on a single Network PC.

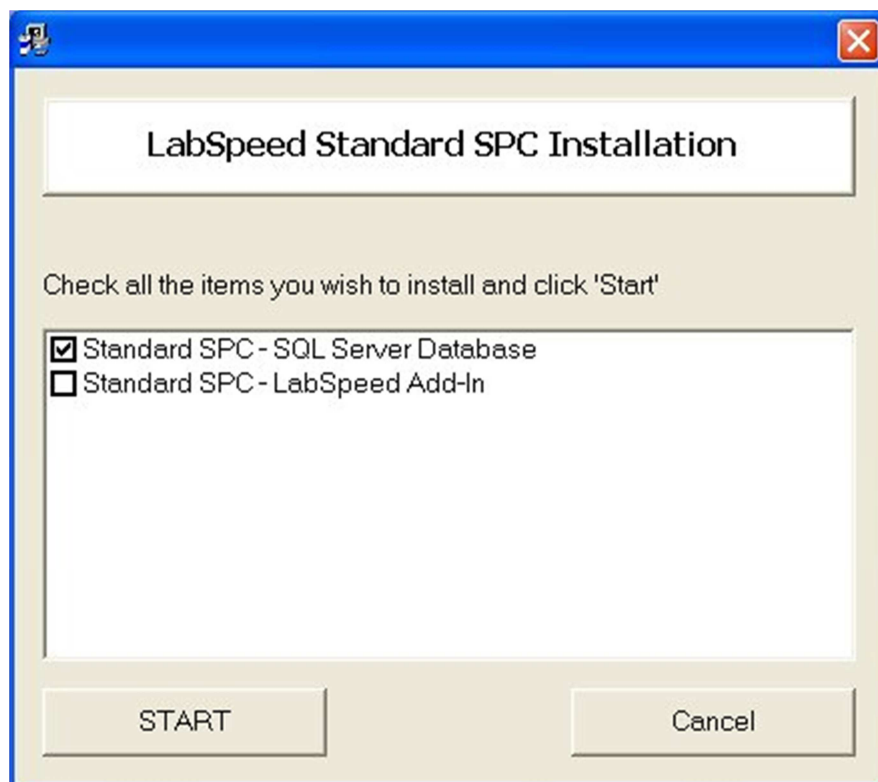
Note: The SQL Server Topos Instance should have already been installed to the network PC when installing the LabSpeed Services

For a Network PC Installation, the following configuration is used

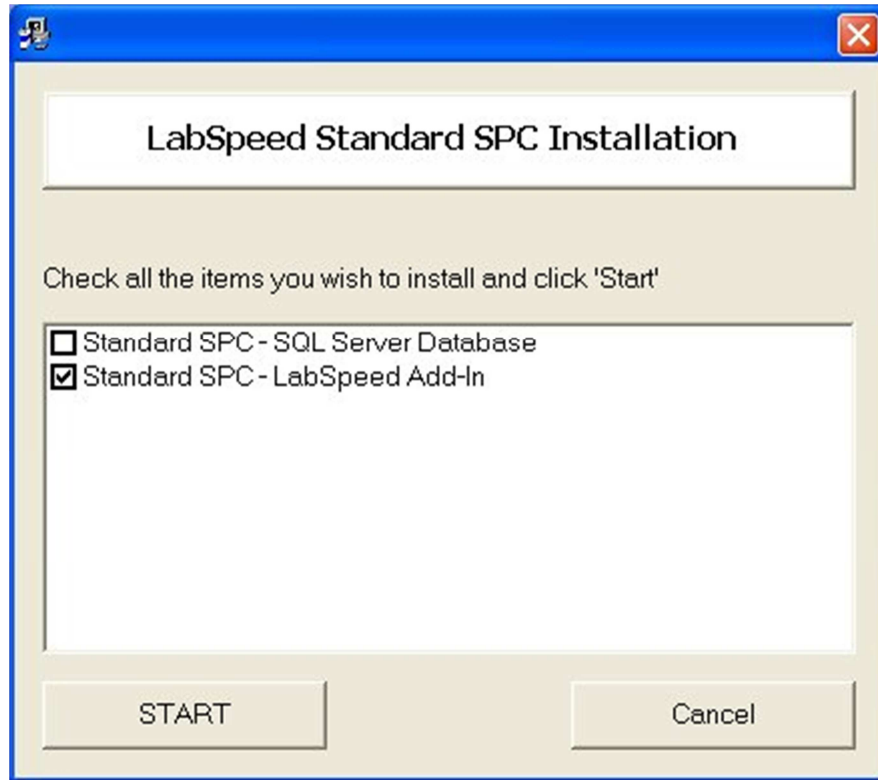
1. Network PC - Install the Standard SPC SQL Server Database
2. Instrument PC - Install the Standard SPC Add-In

LSStandardSPCInstall.exe - This installer will install 2 items – (1) the Standard SPC SQL Server Database and (2) the Standard SPC LabSpeed Add-In. You will need to run it twice, once on the Network PC to install just the database (uncheck Add-In). Then run again on the instrument PC to install just the Add-In (uncheck the Database item).

On the Network PC, install only the Standard SPC SQL Server Database:



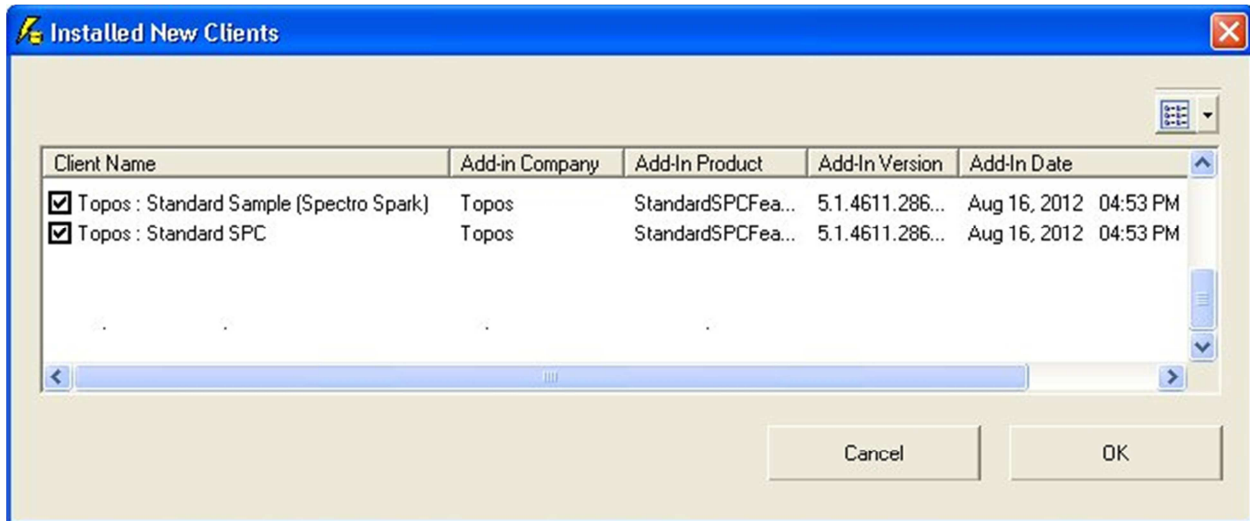
On the Instrument PC, install only the Standard SPC Add-In:



Add the Standard SPC Client(s) to LabSpeed

If this is a new install of LabSpeed, you may skip this section and proceed to [License Activation](#). (On a new install, all installed clients are automatically added to LabSpeed's client list the first time LabSpeed is run.)

If this is a Standard SPC install added to an existing LabSpeed that has been run before, the next time LabSpeed is run you will be directed to the Client Manager to add the new clients.



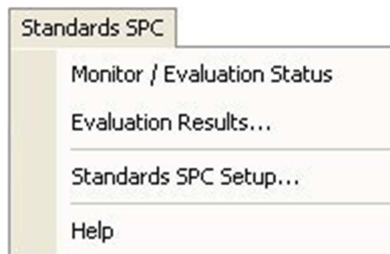
Check both clients shown and click OK.

License Activation

Standard SPC must be activated before it can be used. If you just launched LabSpeed, you may receive two license warnings before the LabSpeed home screen appears.

Go to **Help | Activate LabSpeed Option...** If you have internet access you can easily activate Standard SPC by entering the Licensed ID and Password. If you do not have internet access, follow the directions provided for manual activation.

Once activated, you will need to exit LabSpeed and re-run it. The following Standard SPC Menu will appear to the right of the LabSpeed Help menu



Go to the Standards SPC Help menu item to display the Standards SPC user guide for complete instructions.